

# Brewster Against the Tide 10K

Nickerson State Park  
Brewster, Massachusetts



USATF Certificate MA15010BK  
Effective December 29, 2015 - December 31, 2025

**Note:** Map not drawn to scale.  
Many streets and cross streets  
not on map.

Start, Finish & Miles marked with a 3" spot of yellow paint.

**Start:** On northeast side of Flax Pond Road 39 ft 4 inches NW of white & green Fire Hydrant on opposite side, 47 ft 4 inches NW of Telephone Box 14 on same side under power line, & about 88 ft SE of Flax Pond Beach Parking Lot exit.

**Mile 1 on 1<sup>st</sup> Loop:** On inner side of Deer Park Trail about midway between ends of adjacent parking lot, and about 10 ft W of a concrete cylinder that is about 15 ft N of Trail, & about 80 ft NE of "Healthy Trail" sign at southwest side of parking lot.

**Mile 2 on 1<sup>st</sup> Loop:** On inner side of an uphill section of Ober Trail with no apparent landmarks, but very close to adjacent power line to the north.

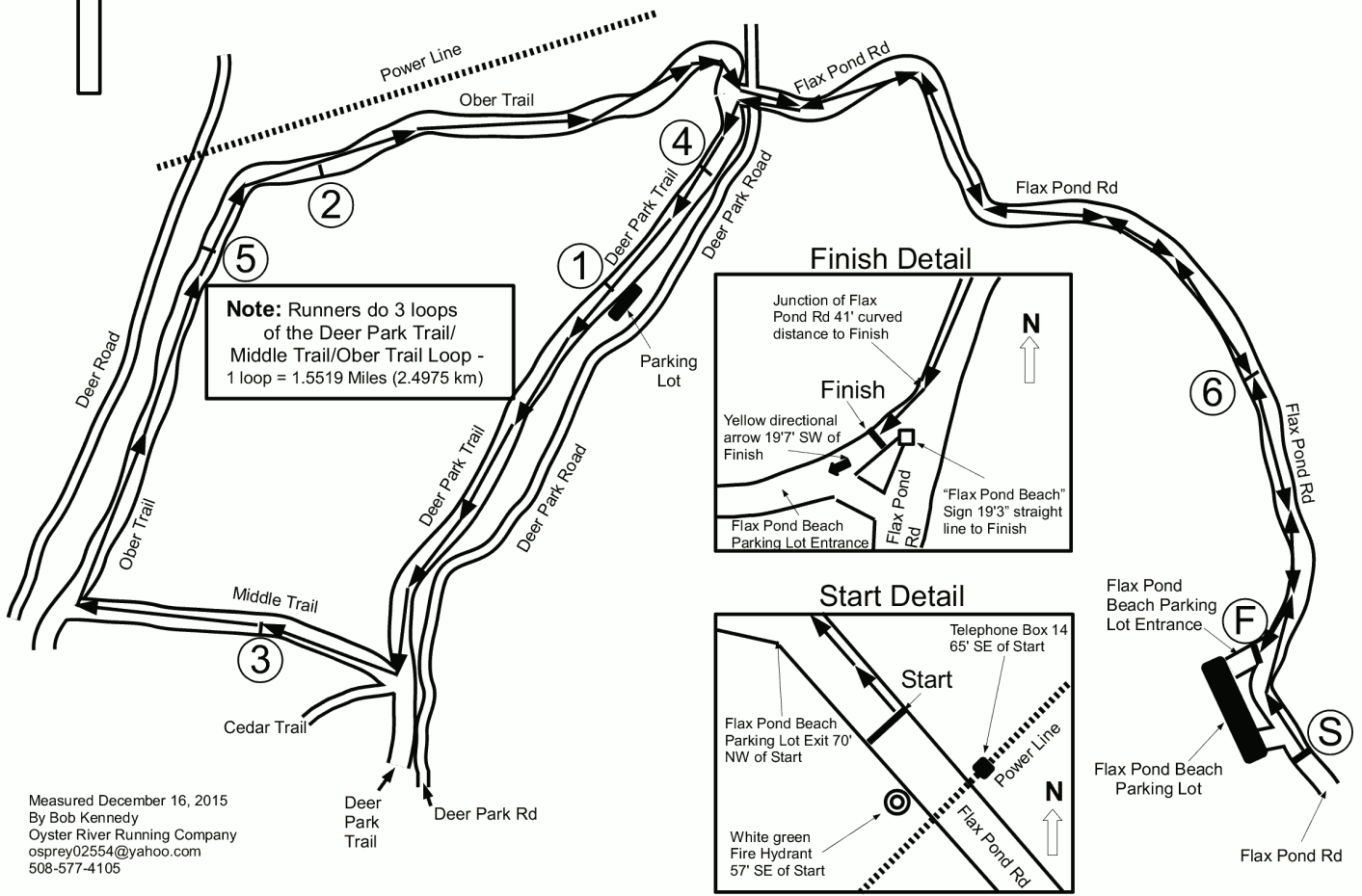
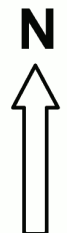
**Mile 3 on 2<sup>nd</sup> Loop:** On outer side of Middle Trail about 0.1 miles W of junction of Deer Park and Middle Trails. No other landmarks.

**Mile 4 on 3<sup>rd</sup> Loop:** On inner side of Deer Park Trail where the trail is about 4 ft from Deer Park Rd, & about 32 ft SW of Utility Box # 1276080508 between trail and road.

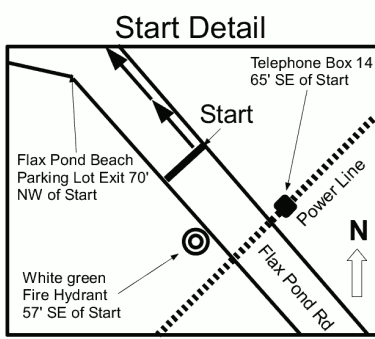
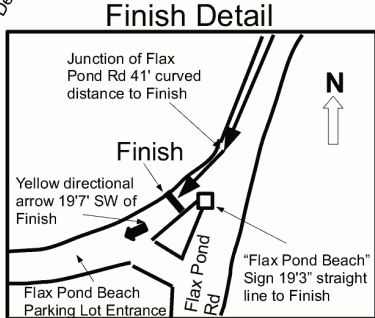
**Mile 5 on 3<sup>rd</sup> Loop:** On outer side of Ober Trail about 72 ft NE of 2 glacial erratic rocks (1 large & 1 medium small) on inside of trail.

**Mile 6:** On west side of Flax Pond Rd on downhill side about 60 ft from highest point. No other landmarks.

**Finish:** On northwest side of Flax Pond Beach Parking Lot entrance 19 ft 3 inches straight line E to "Flax Pond Beach" sign on north side of island between entrance and exit, 19 ft 7 inches NE of yellow directional arrow in middle of entrance, 24 ft 6 inches straight line to the closest point on Flax Pond Rd, & 41 ft curved length to the north junction of Flax Pond Rd & parking lot entrance.



**Note:** Runners do 3 loops  
of the Deer Park Trail/  
Middle Trail/Ober Trail Loop -  
1 loop = 1.5519 Miles (2.4975 km)



Measured December 16, 2015  
By Bob Kennedy  
Oyster River Running Company  
osprey02554@yahoo.com  
508-577-4105